

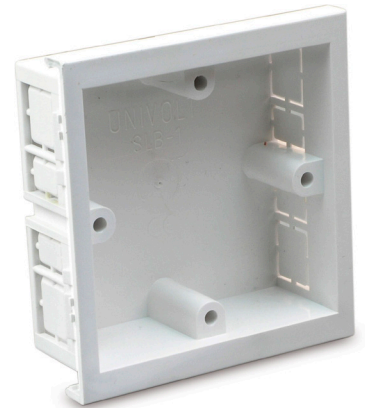
Data sheet

Part No. **SLB 1 WH**

Description outlet box, single gang
for starline trunkings, installation of switches and sockets according to BS 4662, lugs with brass inserts M 3.5 mm, with knock-out bottom and cable entries

Colour white, similar to RAL 9010

Standard: BS 4662



Material	Working temperature	UV-Level*
PVC-U	-25 to +60 °C	L2

Art. no.	Part No.	Number of units	ps	pl
036 075	SLB 1 WH	1	20 pc	160 pc

Further technical details

Details
Material PVC-U

*) L1: Indoor use - to avoid UV discoloration (no exposure to direct sunlight).

L2: Partially shaded: Outside, in areas with sun only for two to four hours a day, in shadowy places.

L3: Full sun: To be used also in areas with whole-day exposure to sunlight, e. g. roofs, antenna poles or PV panels.

Civil engineering and road construction products marked "L2" have to be laid in the shortest time possible to ensure color fastness and stability.