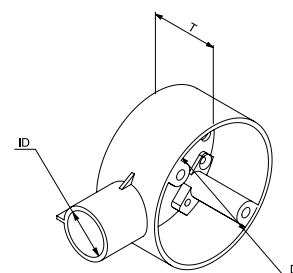


Data sheet

Part No.	HFCB xx/1 WS
Description	terminal box, halogen-free Circular box for surface installation with 2 mounting lugs, standard mounting screw spacing 50.8mm (2") for conduit diameters 20 mm, 25 mm oder 32 mm, with brass inserts M 4, without lid
Colour	white, similar to RAL 9010
Classification	IP30



Standard: BS 4607/5, EN 60754, EN 50642



Working temperature
-25 to +90 °C

Degree of protection (IP)
IP3X

Art. No.	Dimensions Ø/LxW x D	Number of inlets	PU	PU
037038	65 x 32 mm	1	25 pc	200 pc
041622	65 x 32 mm	1	25 pc	200 pc

Further technical details

Details	
Halogen free	True
Mounting method	Wall-/ceiling mounting
Tackable	False
Number of inlets	1
Equipped with	None
Cover model	Mounting cover
Cover attachment	Screwed
Explosion-tested version	False
Circuit integrity	None
For ATEX classification, Ex-zone gas	None
For ATEX classification, Ex-zone dust	None
Material	PC-Blend