

Copper Termination Tools

Regional Availability – Global



Siemon has developed a range of high quality, dependable termination tools, each designed with the installer in mind to deliver ergonomic, efficient and safe termination cycles that ensure your high performance Siemon cabling system can be installed to the highest possible standards.

UltraMAX™ 4-Pair Impact Tool

A key component of the Siemon UltraMAX system, our dynamic 4-pair impact tool provides a versatile, intuitive design that's ideal for your termination needs. The innovative design supports the termination of all 4-pairs in a single smooth action. This quality tool is rated for a minimum of 30,000 cycles and delivers 50 kgs of force, via the impact mechanism, allowing users to trim all 8 conductors flush in a fast, repeatable motion that allows you to terminate critical, high-performance connections at speed.

UltraMAX™ Move Beyond Convention



1. Efficient Performance

The UltraMAX 4-pair impact tool features an ergonomic handle, which can be rotated to allow users to maintain control and comfort when making high-impact terminations in tight spaces.

2. Quality Construction

Our 4-pair impact tool features a durable, high-quality cutting blade that supports up to 5,000 terminations. Its efficient design allows users to terminate and cut conductors in one smooth action, allowing you to deliver quality terminations at speed.

3. Reliable Mechanism

To help you make fast, quality terminations, our 4-pair impact tool features a smooth mechanism that delivers 50 kgs of pressure in every punch-down, allowing you to terminate with confidence.

Part Number	Description
UMAX-PD	UltraMAX 4-pair impact tool
UMAX-PD-H	UltraMAX 4-pair impact tool replacement head

Note: The UltraMAX 48-port 1U patch panels are not compatible with UltraMAX 4-pair impact tool.

For information on UltraMAX, click [here](#).



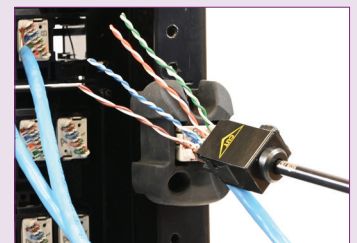
Enhanced Termination

UltraMAX's unique design allows users to terminate all four pairs in one action using the systems 4-pair impact tool. This allows users to terminate 20% faster than traditional termination methods.



Replaceable Blade

Our 4-pair impact tool features a replaceable blade function, allowing users to easily swap blades and keep their terminations clean and precise.



Versatile Terminations

The UltraMAX system also includes a unique palm guard insert which can be attached to racks, or other fixed surfaces, to support effective hands-free terminations.

UltraMAX™ TurboTool

Simon's easy-to-use and ergonomically designed UltraMAX TurboTool significantly reduces the time associated with the termination of category 5e, 6 and 6A UTP UltraMAX outlets. In contrast to a single conductor punchdown tools, which requires eight individual termination cycles for each outlet, the UltraMAX TurboTool seats and cuts all 8 conductors with a single termination action. This quality tool is rated for a minimum of 10,000 cycles, and allows users to consistently terminate high-performance connections with reliability and speed.

UltraMAX™

Move Beyond Convention



1. Rotatable Tool

Provides flexible cable entry enabling termination on either side of outlet to accommodate multiple cable pathway directions and bend radius compliance.



2. Durable Construction

Designed with 16 gauge steel and tough, high impact resistant plastics, this tool was built for the everyday rigors of the job site.

3. Ergonomic Design

The tool's spring-loaded handle has been designed with the user in mind, providing comfortable and simple one-handed terminations.

4. Termination Speed

Speeds up termination time by 15% over a single position punch-down tool process.

5. Safety Latch

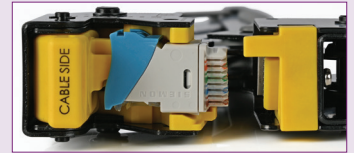
This integrated handle allows users to easily secure the handles for storage and protection between usage.

6. Replaceable Cutting Die

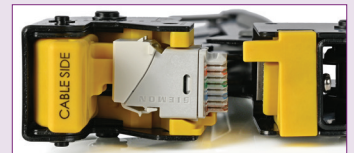
Users can easily replace the cutting die extending the lifetime of the tool for perfect terminations.

Versatile Terminations

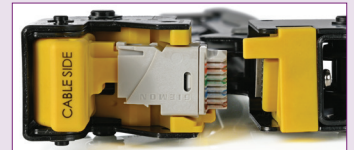
The tool supports termination of all category 5e, 6 and 6A UTP UltraMAX outlets – hybrid, keystone, and panel mount.



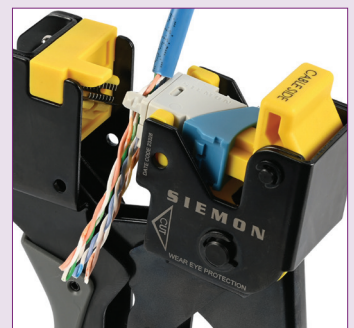
Hybrid Outlet



Keystone Outlet



Panel Outlet



UltraMAX's unique linear lacing channels allow users to terminate their connections from either side in one simple action.

Part Number	Description
UMAX-TT	UltraMAX TurboTool
UMAX-TT-D	UltraMAX TurboTool Replacement Cutting Die

Note: UTP Cable | Recommended wire size (nominal): 22-24 AWG solid and 24-26 AWG stranded.

For information on the UltraMAX TurboTool, click [here](#).

Palm Guard

The Siemon palm guard has been ergonomically designed to provide a safe and convenient means of terminating our UTP flat or angled CT® couplers and UltraMAX™ Outlets. The palm guard absorbs the impact of termination while securing the connector to prevent movement, and includes an adjustable elastic velcro strap and removable insert, which can be used to hold UltraMAX modules while terminating on flat surfaces.

Part Number	Description
PG2	Palm guard with UltraMAX insert
PG2-U	UltraMAX palm guard insert only
PG	Palm Guard with MAX insert (for use with both CT series and MAX series outlets)
PG-MX6	MAX palm guard insert for all punch-down MAX modules



PG-MX6



Palm Guard
(shown with CT coupler)



Palm Guard
(shown with PG-MX6)

Z-MAX® and Z-PLUG™ Termination Tools

Our range of "Z-TOOLS" form an integral part of the termination processes for Siemon's innovative Z-MAX™ and Z-PLUG™ outlets and have been designed with speed, versatility and quality in mind.

Z-MAX is ideal for straight terminations, while the Z-MAX 45 is uniquely designed to support angled terminations. Both can be used to terminate UTP and shielded Z-MAX outlets and provide an easy-to-use and ergonomically designed experience which secures the cable retention/grounding clip and fully engages the termination module into the back of the outlet in one smooth, repeatable action.

A separate tool is also offered for the field-terminated Z-PLUG, which borrows the same core principles from the Z-MAX and Z-MAX 45 equivalents to provide a robust, fast and simple termination process for your critical field terminations.

Part Number	Description
Z-TOOL	Termination tool for standard Z-MAX outlets
Z-TOOL-45	Termination tool for Z-MAX-45 outlets
Z-TOOL-ZP	Termination tool for Z-PLUG connectors



Z-TOOL



Z-TOOL-ZP



Z-TOOL-45

Copper Termination Tools

AllPrep™ Cable Preparation Tool

The AllPrep Cable Preparation Tool provides a simple and effective method of preparing both coaxial and twisted-pair cable for termination. The tool features two reliable, color-coded dies that are interchangeable for each media type. The coaxial die strips RG59 and RG6 coaxial cable and the twisted-pair die strips a wide variety of UTP, screened and fiber cables.

Part Number	Description
CPT-RGTP	AllPrep cable preparation tool for coax, twisted pair and fiber cables
CPT-DIE-RG	Replacement coax die, Black
CPT-DIE-TP	Replacement twisted-pair die, Yellow



CPT-RGTP

TERA® Cable Preparation Tool

The TERA Cable Preparation Tool uses a patented process to significantly reduce the time required to prepare fully shielded S/FTP cable. The tool includes an insert die with a blade, which is specifically designed to accurately strip the jacket and foil from 4-pair S/FTP cable without damaging the conductors. A template is also included to pre-align cable pairs and ensure proper pair positioning during termination.

Part Number	Description
CPT-T	TERA cable preparation tool
CPT-DIE-T4	4-pair S/FTP replacement cable die, Red
CPT-DIE-TMPL	Replacement wiring template, Red



CPT-T

CPT

The CPT provides a simple and effective method to remove the outer cable jacket from 2-, 3-, or 4-pair cables without damaging the inner conductor insulation. The CPT is recommended for use with any round cable with an exterior diameter from 2.54 – 6.35mm (0.100 – 0.250") and an outer jacket thickness from 0.380 – 0.635mm (0.015 – 0.025").

Part Number	Description
CPT	Cable preparation tool

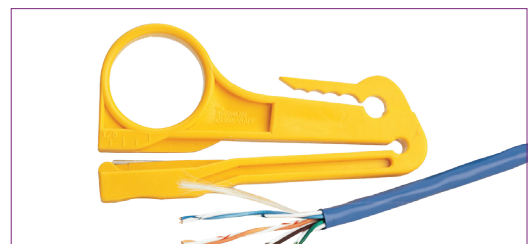


CPT

CPT-WEB

The CPT-WEB is designed to easily strip the outer cable jacket, flatten, and separate the webbed conductors of Siemon's category 5e cross-connect jumper wire and other UTP cable with webbed conductor pairs.

Part Number	Description
CPT-WEB	Cable preparation tool for webbed cable pairs



CPT-WEB

Copper Termination Tools

PT-908 Crimp Tool

This 3-in-1 ratchet-style crimp tool cuts, strips, and crimps modular plugs on either round or flat cables. The parallel action design maintains accurate alignment of the die with the plug for a precision crimp every time. The PT-908 comes with a padded carrying case which includes a storage compartment for carrying spare dies, replacement stripper blades, and modular plugs, and will attach to a technician's belt.

Part Number	Description
PT-908	Crimp tool with built-in round cable cutter/stripper, 8-position die set and padded nylon carrying case
PT-908-D	Crimp tool with built-in round cable cutter/stripper, 8-position die set packaged in a clear plastic display case
PT-DIE-8	8-position die set
PT-DIE2-8	8-position die set (compatible with P6U-8-8 plugs)
PT-DIE-6	6-position die set
PT-BLD	Standard PT-908 replacement blade (long) with screws and allen wrench



PT-908

Technical Tip!

Siemon does not recommend field termination of modular cords. We recommend the use of factory-terminated and tested modular cords for any category 5e or higher application.

S110® Multi-Pair Termination Tool

The Siemon S110/S210 multi-pair termination tool is a versatile impact tool designed to terminate and cut UTP cable and seat connecting blocks. The impact mechanism and termination blades have been designed to reliably terminate and cut UTP cable the first time, every time. The tool features an easy to hold, ergonomically designed handle that helps reduce fatigue when trimming wire or seating connecting blocks to the wiring base.

Part Number	Description
S788J5T-110	5-pair S110 termination tool
S788J5H-110	5-pair S110 replacement head for impact tool, including housing, cutting blade and insertion assembly



788J5T-110



S788J5H-110

Because we continuously improve our products, Siemon reserves the right to change specifications and availability without prior notice.

North America
P: (1) 860 945 4200

Mexico
P: (521) 556 387 7708/09/10

Latin America
P: (571) 657 1950/51/52

Europe
P: (44) 0 1932 571771

China
P: (86) 215385 0303

India, Middle East & Africa
P: (971) 4 3689743

Asia Pacific
P: (61) 2 8977 7500

Siemon OEM Technologies
P: (1) 860 945 4213
www.siemon.com/OEM