

Category 6 UTP LJ6C & Euro Modules

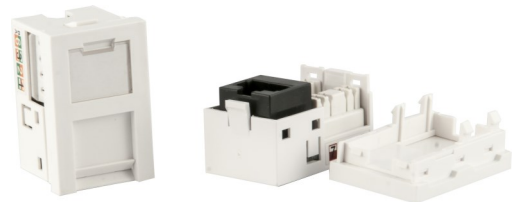


Matrix Cat6 UTP LJ6C & Euro modules comply & out perform all requirements outlined in ANSI/TIA/EIA-568-B.2-1 Category 6 & ISO/IEC 11801 Category 6 and feature both T568A & T568B colour schedules.

- Removable outlet identification strip
- Euro module available as Slim line or Full Depth Module
- Euromod Label code: SHARPMARK CL20
- LJ6C Label code: SHARPMARK PL15
- Built-in cable tie loop
- Krone style IDC
- Slimline Available in Black

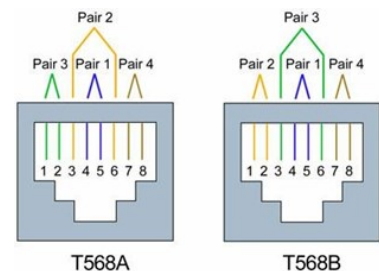
Matrix Cat6 modules are also accompanied by a selection of blanks, colour matched to the modules to ensuring a uniform presentation.

- Manufactured in gloss ABS plastic
- Available in half or quarter sizes
- Designed to fit standard faceplates



Colour codes:

- Pair 1 – BLUE + WHITE/BLUE
- Pair 2 – ORANGE + WHITE/ORANGE
- Pair 3 – GREEN + WHITE/GREEN
- Pair 4 – BROWN + WHITE/BROWN



Description	Part Number
Cat6 Slim Line Euro Module—White	MATRIX-C6-45EURO
Cat6 Slim Line Euro Module—Black	MATRIX-C6-45EURO-BK
Cat6 Full Depth Euro Module	MATRIX-MODFD-C6-45EURO
Cat6 LJ6C Module	MATRIX-C6-45-6C
Euro 1/4 Blank (50 x 12.5)	MATRIX-BLANKQTR
Euro 1/2 Blank (50 x 25)	MATRIX-BLANKHALF
LJ6C 1/4 Blank (38 x 12.5)	MATRIX-BLANKQTR(LJ6C)
LJ6C 1/2 Blank (38 x 25)	MATRIX-BLANKHALF(LJ6C)

Category 6 UTP LJ6C & Euro Modules



Specifications

- Size: 25×50×23mm (Slim Line Module)
- Size: 25x50x33 mm (Full Depth Module)
- Size: 25x38.5x20 mm (LJ6C Module)
- Colour: Gloss White
- Exceeds ANSI/TIA/EIA-568-B.2-1 Category 6 & ISO/IEC 11801 Category 6
- Krone style IDC

Mechanical Characteristics

- Material: Shell: ABS (UL94V-0); Jack: PBT
- 50μ gold plate Ph.Br contact
- IDC: Tin over nickel plate Ph.Br.
- IDC max. connections >200 times
- Sockets: max. insertions >750 times

Electrical Performance

- Contact Resistance: $\leq 10\text{m}\Omega$
- Insulation Resistance: $\geq 1000\text{M}\Omega$
- Dielectric intensity: DC 2000V, no spark over and fly arc in 1 min.

Environment Characteristics

- Temperature: $-20^{\circ}\text{C} \sim +65^{\circ}\text{C}$
- Relative humidity: max 95% at 20°C

This document subject to change without notice.